



# Notice of traffic management in Drayton Bassett

November 2021 | [www.hs2.org.uk](http://www.hs2.org.uk)

High Speed Two (HS2) is the new high speed railway for Britain. Balfour Beatty VINCI is working in partnership with HS2 Ltd to build the new high speed railway in your area.

## The work we will be doing

We will be carrying out topographical, utility and drainage surveys in Drayton Bassett. To complete these surveys a team of engineers will visit the location and record what is present in the area and also carry out CCTV surveys of the drainage. The works will also include digging into the ground to establish what is underneath the surface. This will provide us with information we need to develop our construction plans. For the work to be completed in a safe environment, we will:

- Install a single lane closure on a section of the A453 Sutton Road between Monday 29 November and Friday 3 December 2021.
- Close Shirral Drive on Monday 6 December and Tuesday 7 December (Diversion will be in place).
- Close Drayton Lane between Wednesday 8 December and Friday 10 December (Diversion will be in place).

## When these works will take place

These works will take place between Monday 29 November and Friday 10 December from 9.30 am until 3.30 pm. We will have a signed diversion in place for the closures and access will be maintained to the businesses and properties.

## HS2 during the Coronavirus pandemic

We are continually reviewing the works on our construction sites in line with Government and Public Health England (PHE) advice on dealing with coronavirus. The Government's current coronavirus strategy makes clear that construction activity can continue as long as it complies with this guidance.

The health and safety of our workforce and the communities we affect is our key priority. Please be assured that those sites that are currently still working are doing so because they can operate within PHE and construction industry guidelines.

**If you have a question about HS2 or our works, please contact our HS2 Helpdesk team on 08081 434 434 or email [hs2enquiries@hs2.org.uk](mailto:hs2enquiries@hs2.org.uk)**

## Duration of works

These surveys will take place between Monday 29 November to Friday 10 December 2021.

Our working hours will be 9.30 am to 3.30 pm each day (Mon-Fri).

Our workforce may be on site one hour before and after to set up and take down our work equipment.

## What to expect

Traffic management while we complete these works.

We will install signage on the roadside.

Some low level noise will be generated from the work we are completing.

## What we will do

Inform you in advance of any changes to the date(s) shown.

Keep all sites safe and secure.

Ask you to register with [hs2instaffordshire.co.uk](http://hs2instaffordshire.co.uk) to receive updates.

# Notice of traffic management in Drayton Bassett

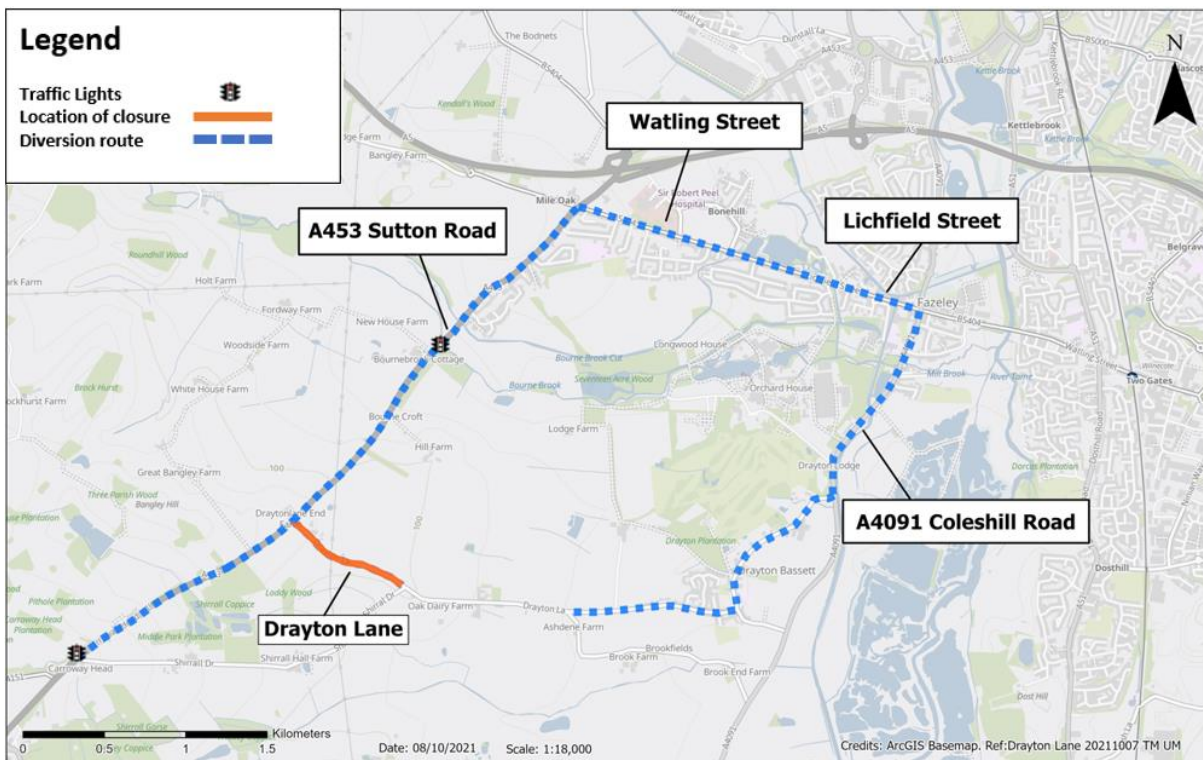
Notification



[www.hs2.org.uk](http://www.hs2.org.uk)

## Location of traffic management

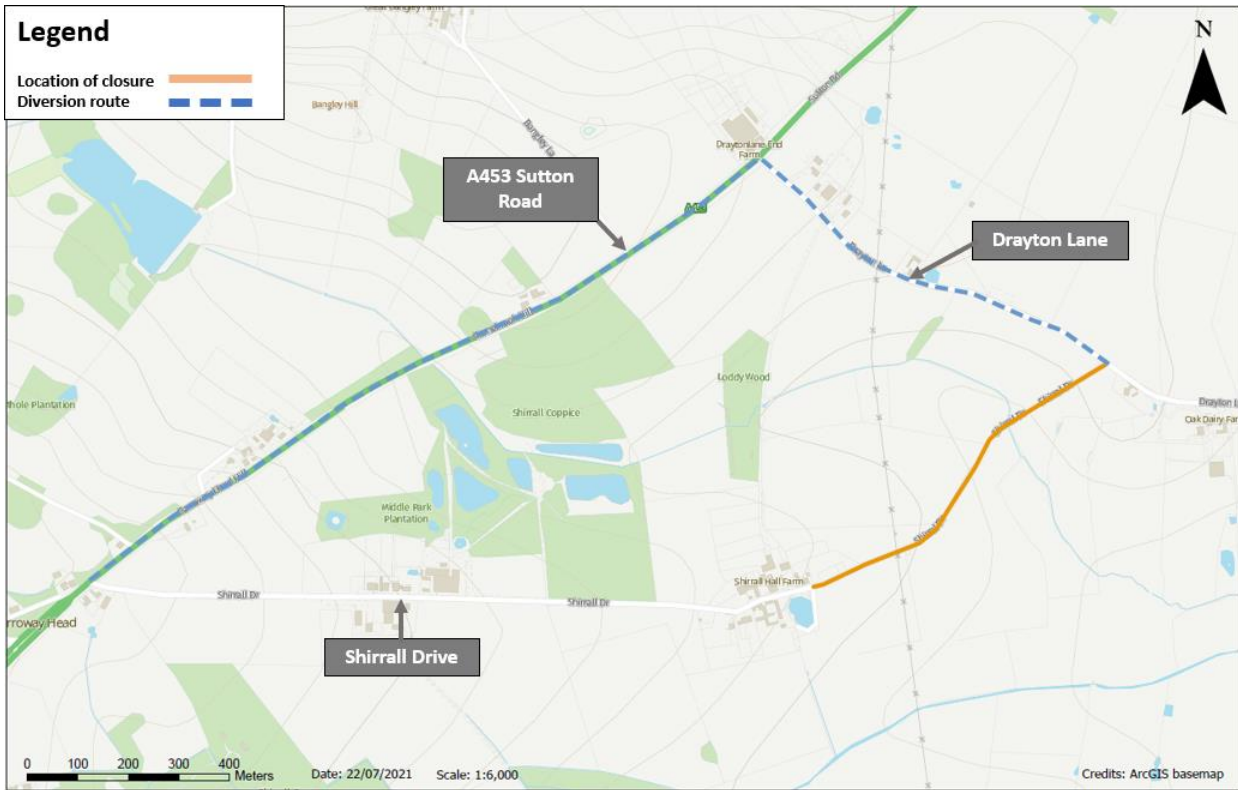
The map below outlines the traffic management on the A453 Sutton Road and the temporary closure of Drayton Lane and diversion route.



Contact our HS2 Helpdesk team on **08081 434 434**

## Location of traffic management

The map below outlines the diversion route for the temporary closure of Shirral Drive and diversion route.



# Keeping you informed

We are committed to keeping you informed about work on HS2. This includes ensuring you know what to expect and when to expect it, as well as how we can help.

## Residents' Charter and Commissioner

The Residents' Charter is our promise to communicate as clearly as we possibly can with people who live along or near the HS2 route.

[www.gov.uk/government/publications/hs2-residents-charter](http://www.gov.uk/government/publications/hs2-residents-charter)

We also have an independent Residents' Commissioner whose job is to make sure we keep to the promises we make in the Charter and to keep it under constant review. Find reports at:

[www.gov.uk/government/collections/hs2-ltd-residents-commissioner](http://www.gov.uk/government/collections/hs2-ltd-residents-commissioner)

You can contact the Commissioner at: [residentscommissioner@hs2.org.uk](mailto:residentscommissioner@hs2.org.uk)

## Construction Commissioner

The Construction Commissioner's role is to mediate and monitor the way in which HS2 Ltd manages and responds to construction complaints. You can contact the Construction Commissioner by emailing: [complaints@hs2-cc.org.uk](mailto:complaints@hs2-cc.org.uk)

## Property and compensation

You can find out all about HS2 and properties along the line of route by visiting:

[www.gov.uk/government/collections/hs2-property](http://www.gov.uk/government/collections/hs2-property)

Find out if you're eligible for compensation at:

[www.gov.uk/claim-compensation-if-affected-by-hs2](http://www.gov.uk/claim-compensation-if-affected-by-hs2)

## Holding us to account

If you are unhappy for any reason you can make a complaint by contacting our HS2 Helpdesk team. For more details on our complaints process, please visit our website:

[www.hs2.org.uk/how-to-complain](http://www.hs2.org.uk/how-to-complain)

## Contact Us

Contact our HS2 Helpdesk team all day, every day of the year on:

 Freephone **08081 434 434**

 Minicom **08081 456 472**

 Email **[hs2enquiries@hs2.org.uk](mailto:hs2enquiries@hs2.org.uk)**

Write to:

**FREEPOST**

**HS2 Community Engagement**

Website **[www.hs2.org.uk](http://www.hs2.org.uk)**

To keep up to date with what is happening in your local area, visit: **[www.hs2inyourarea.co.uk](http://www.hs2inyourarea.co.uk)**

**Please contact us if you'd like a free copy of this document in large print, Braille, audio or easy read. You can also contact us for help and information in a different language.**

HS2 Ltd is committed to protecting personal information. If you wish to know more about how we use your personal information please see our Privacy Notice <https://www.gov.uk/government/publications/high-speed-two-ltd-privacy-notice>

**Reference number: HS2-MW-BBV-Ph1-Ar-No-N2-Traf-3-29/11/2021**

High Speed Two (HS2) Limited, registered in England and Wales.  
Registered office: Two Snowhill, Snow Hill Queensway, Birmingham B4 6GA.  
Company registration number: 06791686. VAT registration number: 888 8512 56.